

# THANKSGIVING (C): Psalm 145 (vv. 2-11)

Tone II



I will praise your name for ev - er Lord.

Org.

1

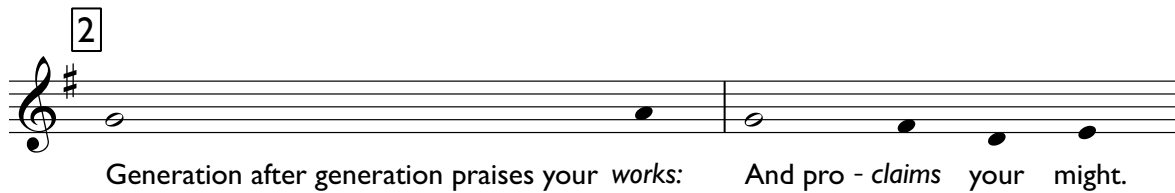


Ev - 'ry day I will bless you: And I will praise your name forever and ev - er.



Great is the Lord and highly to be praised: His greatness is un - search - a - ble.

2

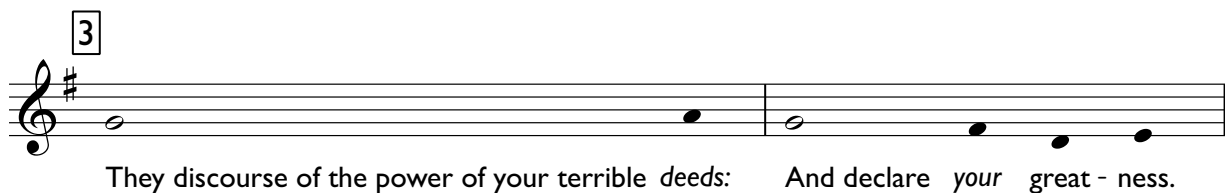


Generation after generation praises your works: And pro - claims your might.



They speak of the splendor of your glorious ma - jes - ty: And tell of your wond - rous works.

3

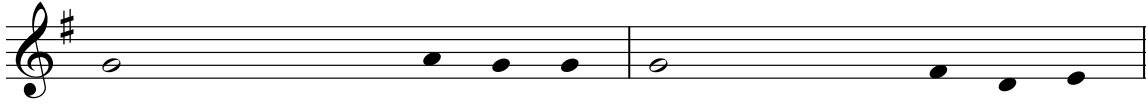


They discourse of the power of your terrible deeds: And declare your great - ness.

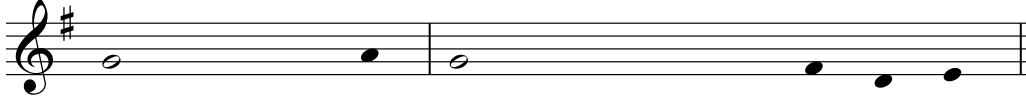


They publish the fame of your abundant good - ness: And joyfully sing of your jus - tice.

4



The Lord is gracious and *mer - ci - ful*:    Slow to anger and of *great* kind-ness.

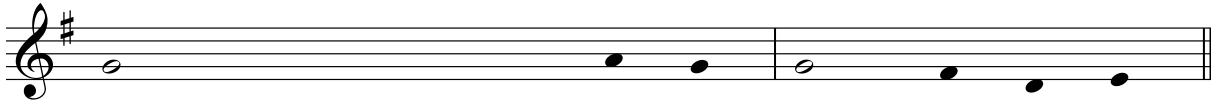


The Lord is good to *all*:    And compassionate towards *all*    his works.

5



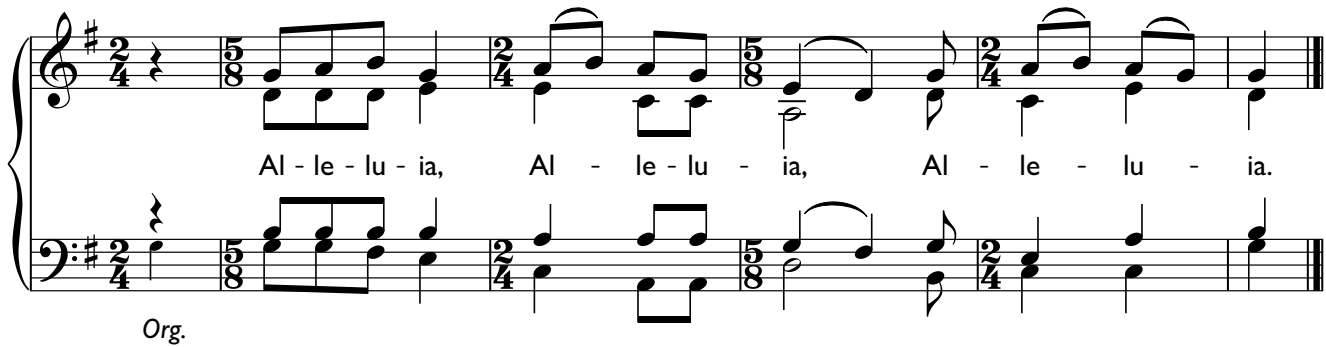
Let all your works give you *thanks*    O    Lord:    And let your faithful ones bless you.



Let them discourse of the glory of your *King - dom*:    And speak of    your    might.

# THANKSGIVING: Gospel Acclamation

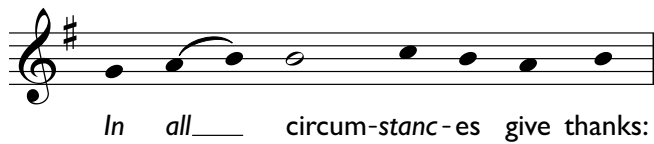
Tone VI



Org.

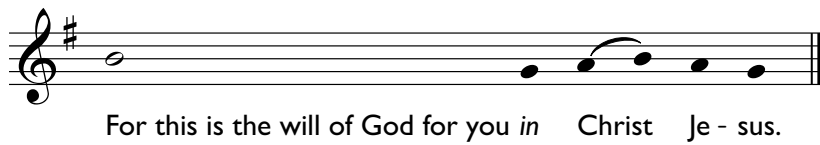
Al - le - lu - ia, Al - le - lu - ia, Al - le - lu - ia.

The organ accompaniment is written for a two-staff instrument in G major (one sharp). It features a complex rhythmic pattern with frequent changes between 2/4, 5/8, and 3/4 time signatures. The melody is primarily in the right hand, with the left hand providing harmonic support. The piece concludes with a double bar line.



In all \_\_\_\_\_ circum-stanc-es give thanks:

A single vocal line in G major, starting with a half note G4, followed by a quarter note A4, a quarter note B4, a half note C5, and a quarter note D5. The line ends with a double bar line.




For this is the will of God for you in Christ Je - sus.

A single vocal line in G major, starting with a half note G4, followed by a quarter note A4, a quarter note B4, a half note C5, and a quarter note D5. The line ends with a double bar line.

**THANKSGIVING (C): Psalm 145** (Response)

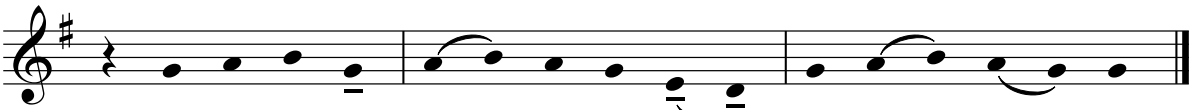
*Tone II*



I will praise your name for ev - er Lord.

**Gospel Acclamation**

*Tone VI*



Al - le - lu - ia, Al - le - lu - ia, Al - le - lu - ia.