

ADVENT 4 (A): Responsorial Psalm 24 (vv. 1-6)

Tone IV.A
Fauxbourdon by T. L. de Victoria

Org.

Let the Lord ent - er, he is the king of glo - ry.

The organ introduction consists of five measures. The first measure is in 3/4 time, followed by four measures in 2/4 time. The melody is played in the right hand, and the bass line is in the left hand. The piece ends with a double bar line.

1

The Lord's are the earth and its full - ness: The world and all who dwell in it.

The first line of the vocal melody is in 2/4 time. It begins with a half note, followed by a quarter note, and then a half note. The melody is simple and easy to sing.

For he founded it up-on the seas: And established it up - on the ri - vers.

The second line of the vocal melody is in 2/4 time. It begins with a half note, followed by a quarter note, and then a half note. The melody is simple and easy to sing.

2

Who can ascend the mountain of the Lord? Or who may stand in his ho - ly place.

The third line of the vocal melody is in 2/4 time. It begins with a half note, followed by a quarter note, and then a half note. The melody is simple and easy to sing.

One whose hands are sinless; whose heart is clean: Who de-sires not what is vain.

The fourth line of the vocal melody is in 2/4 time. It begins with a half note, followed by a quarter note, and then a half note. The melody is simple and easy to sing.

3

He shall receive a blessing from the Lord: A reward from God his sav - ior.

The fifth line of the vocal melody is in 2/4 time. It begins with a half note, followed by a quarter note, and then a half note. The melody is simple and easy to sing.

Such is the race that seeks for him: That seeks the face of the God of Ja - cob.

The sixth line of the vocal melody is in 2/4 time. It begins with a half note, followed by a quarter note, and then a half note. The melody is simple and easy to sing.

VERSES 1-3 Optional Second Part

1. For he founded it up - - on the seas:

2. One whose hands are sinless; whose heart is clean:

3. Such is the race that seeks for him:

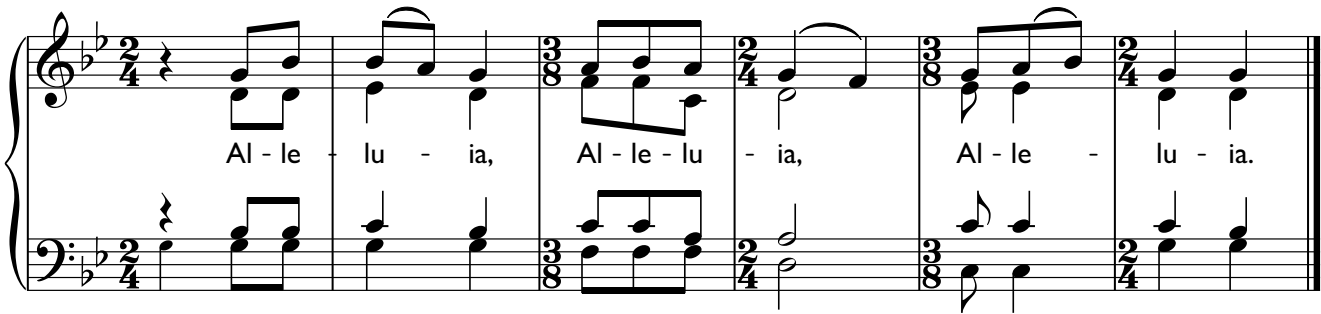
1. And established it up - on the ri - vers.

2. Who de - sires not what is vain.

3. That seeks the face of the God of Ja - cob.

ADVENT 4 (A): Gospel Acclamation

Tone II



Al - le lu - ia, Al - le - lu - ia, Al - le - lu - ia.

The organ part consists of two staves. The right hand (treble clef) plays a melody in 2/4 time, with a key signature of one flat (B-flat). The left hand (bass clef) provides harmonic support with chords and single notes. The tempo is marked 'Org.'.

Org.



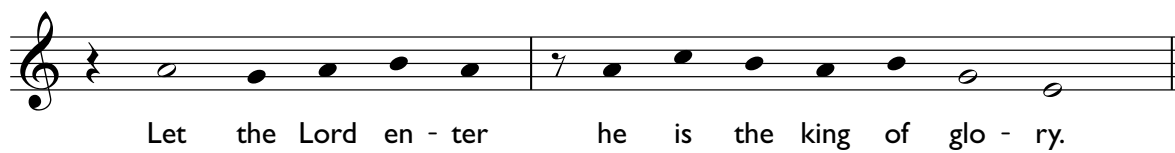
The vir - gin shall conceive and bear a son: and they shall name him E - man - u - el.

The vocal line is a single staff in 2/4 time, with a key signature of one flat (B-flat). It features a simple melody with a final cadence.

The vir - gin shall conceive and bear a son: and they shall name him E - man - u - el.

ADVENT 4 (A): Psalm 24 (Response)

Tone IV.A



Gospel Acclamation

Tone II

