

18 OT (C): Psalm 90 (vv. 3-6, 12-14, 17)

Tone V

Org.

If to - day you hear his voice, hard - en not your hearts.

1

You turn man back to dust: Saying Return O child - ren of men.

For a thousand years in your sight are but as yes - ter day; now that it is past:

Or as a watch of the night.

2

You make an end of them in *their* sleep: The next morning they are *like* the chang - ing grass.

Which at dawn springs up a - new: But by the eve - ning wilts and fades.

3

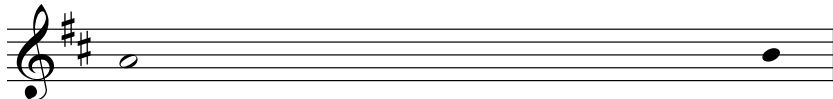
Teach us to number our days a - right: That we may gain wis - dom of heart.

Return O Lord; how long? Have pity on your ser - vants.

4



Fill us at daybreak with your *kind-ness*: That we may shout for joy and *glad-ness* all our days.



And may the gracious care of the Lord our God be *ours*:



Prosper the work of our hands for us; Prosper the *work* of our hands.

18 OT (C): Gospel Acclamation

Tone VII.a

Al - le - lu - ia, Al - le - lu - ia, Al - le - lu - ia.


Org.



Bless - ed are the *poor* in *Spi - rit*: For theirs is the *king-dom* of heav'n...

18 OT (C): Psalm 90 (Response)

Tone V



The musical notation is written on a single staff in treble clef with a key signature of two sharps (F# and C#). The melody consists of two measures. The first measure contains a quarter rest followed by seven eighth notes: G4, A4, B4, C5, B4, A4, G4. The second measure contains a quarter note G4, a quarter note A4 with a sharp sign, a quarter note B4, a quarter note C5, a quarter note B4, a quarter note A4, and a quarter note G4 with a fermata. The lyrics are placed below the notes.

If to - day you hear his voice, hard - en not your hearts.

Gospel Acclamation

OT Mass III

Al - le - lu - ia, Al - le - lu - ia, Al - le - lu - ia.

The musical notation is written on a single staff in treble clef with a key signature of one flat (B-flat major) and a 3/4 time signature. The melody consists of three measures. The first measure begins with a quarter rest, followed by a quarter note G4, a quarter note A4, and a half note Bb4. The second measure contains a quarter note Bb4, a quarter note C5, a quarter note Bb4, and a half note A4. The third measure contains a quarter note G4, a quarter note F4, a quarter note E4, and a half note D4. The piece concludes with a double bar line.