

LENT I (C): Responsorial Psalm

LENT I (C): Responsorial Psalm

Tone VII.c
Fauxbourdon by AH

Be with me Lord when I am in trou-ble.

Org.

VERSE 4 on pg. 4

You who dwell in the shelter of the Most High: Who abide in the shadow of the Al-migh-ty.

Say to the Lord my ref - uge and fort - ress: My God in whom I trust.

No evil shall be - fall you: Nor shall affliction come near your tent.

For to his angels he has given com-mand a - bout you: That they guard you in all your ways.

Upon their hands they shall bear you up: Lest you dash your foot a - gainst the stone.

You shall tread upon the asp and the vi - per: You shall trample down the li-on and the dra-gon.

VERSE 4 on pg. 4

VERSES 1 & 2: Optional Second Part

1. Say to the Lord my refuge and my for - - - tress:
2. For to his angels he has given command a bout - - - you:

1. My God in whom I trust.
2. That they guard your foot a - - - gainst your ways.

VERSE 3: Optional Second Part

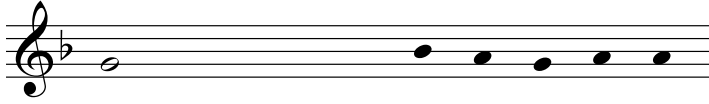
3. You shall tread upon the asp and vi - - - per:

3. You shall trample down the lion and dra - - - gon.

4



Because he clings to me I *will* de-liv-er him: I will set him on high because he acknow-*ledg*-es my name.



He shall call upon me and I will ans-wer him:



I will be with him in distress; I will deliver him and glo-ri-fy him.---

VERSE 4: Optional Second Part

4. He shall call upon me and I will an - swer him:

4. I will be with him in distress; I will deliver him_ and_ glo - ri - fy_ him.

REFRAIN

Be with_ me Lord when I am in trou-ble.

Org.

LENT I (C): Gospel Acclamation

Tonus Peregrinus

Musical score for organ and voice. The organ part is in the left hand, and the voice part is in the right hand. The key signature is one flat (B-flat), and the time signature is 3/4. The organ part starts with a 3/4 measure, followed by two 2/4 measures, and ends with a 3/4 measure. The voice part starts with a 3/4 measure, followed by two 2/4 measures, and ends with a 3/4 measure. The lyrics are: "Praise to you Lord Je - sus Christ, King of end - less glo - ry."

Org.

Musical staff for voice. The key signature is one flat (B-flat), and the time signature is 3/4. The melody consists of a half note followed by four quarter notes. The lyrics are: "One___ does not live by bread a - lone:"

Musical staff for voice. The key signature is one flat (B-flat), and the time signature is 3/4. The melody consists of a half note followed by four quarter notes. The lyrics are: "But on ev'ry word that comes forth from the mouth of God. ___"