

18 OT (C): Psalm 90 (vv. 3-6, 12-14, 17)


Tone V



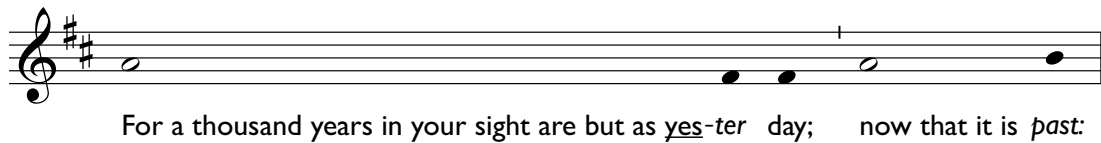
Org.

If to - day you hear his voice, hard - en not your hearts.

1



You turn man back to dust: Saying Return O child - ren of men.




For a thousand years in your sight are but as yes - ter day; now that it is past:



Or as a watch of the night.

2

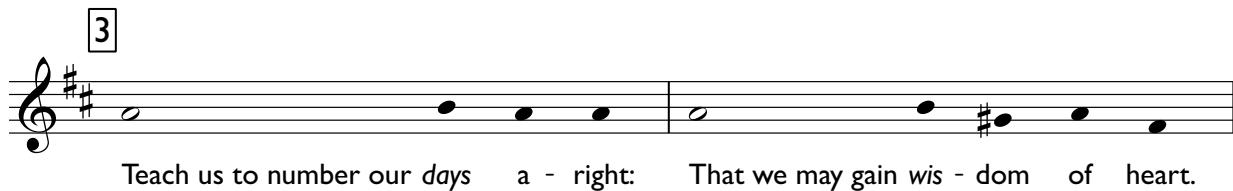


You make an end of them in *their* sleep: The next morning they are *like* the chang - ing grass.



Which at dawn springs up a - new: But by the eve - ning wilts and fades.

3



Teach us to number our days a - right: That we may gain wis - dom of heart.

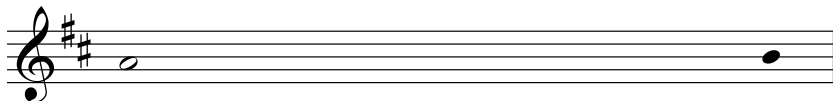


Return O Lord; how long? Have pity on your ser - vants.

4



Fill us at daybreak with your *kind-ness*: That we may shout for joy and *glad-ness* all our days.



And may the gracious care of the Lord our God be *ours*:



Prosper the work of our hands for us; Prosper the *work* of our hands.

18 OT (C): Gospel Acclamation

Tone VII.a

Al - le - lu - ia, Al - le - lu - ia, Al - le - lu - ia.

Org.



Bless - ed are the *poor* in *Spi - rit*: For theirs is the *king-dom* of heav'n...

18 OT (C): Psalm 90 (Response)

Tone V




The musical notation is written on a single staff in treble clef with a key signature of two sharps (F# and C#). The melody consists of two measures. The first measure contains a quarter rest followed by seven eighth notes: G4, A4, B4, C5, B4, A4, and G4. The second measure contains a quarter note G4 with a sharp sign, followed by a quarter note A4, a quarter note B4, a quarter note C5, and a quarter note G4 with a sharp sign. The final note is underlined. The piece concludes with a double bar line.

If to - day you hear his voice, hard - en not your hearts.

Gospel Acclamation

OT Mass III



Al - le - lu - ia, Al - le - lu - ia, Al - le - lu - ia.

The musical notation is written on a single staff in a treble clef with a key signature of one flat (B-flat). The melody consists of three measures. The first measure contains a quarter rest followed by a quarter note G4, a quarter note A4, a quarter note B4, and a half note C5. The second measure contains a quarter note B4, a quarter note A4, a quarter note G4, and a quarter note F4. The third measure contains a quarter note E4, a quarter note D4, a quarter note C4, and a quarter note B3. The piece concludes with a double bar line.